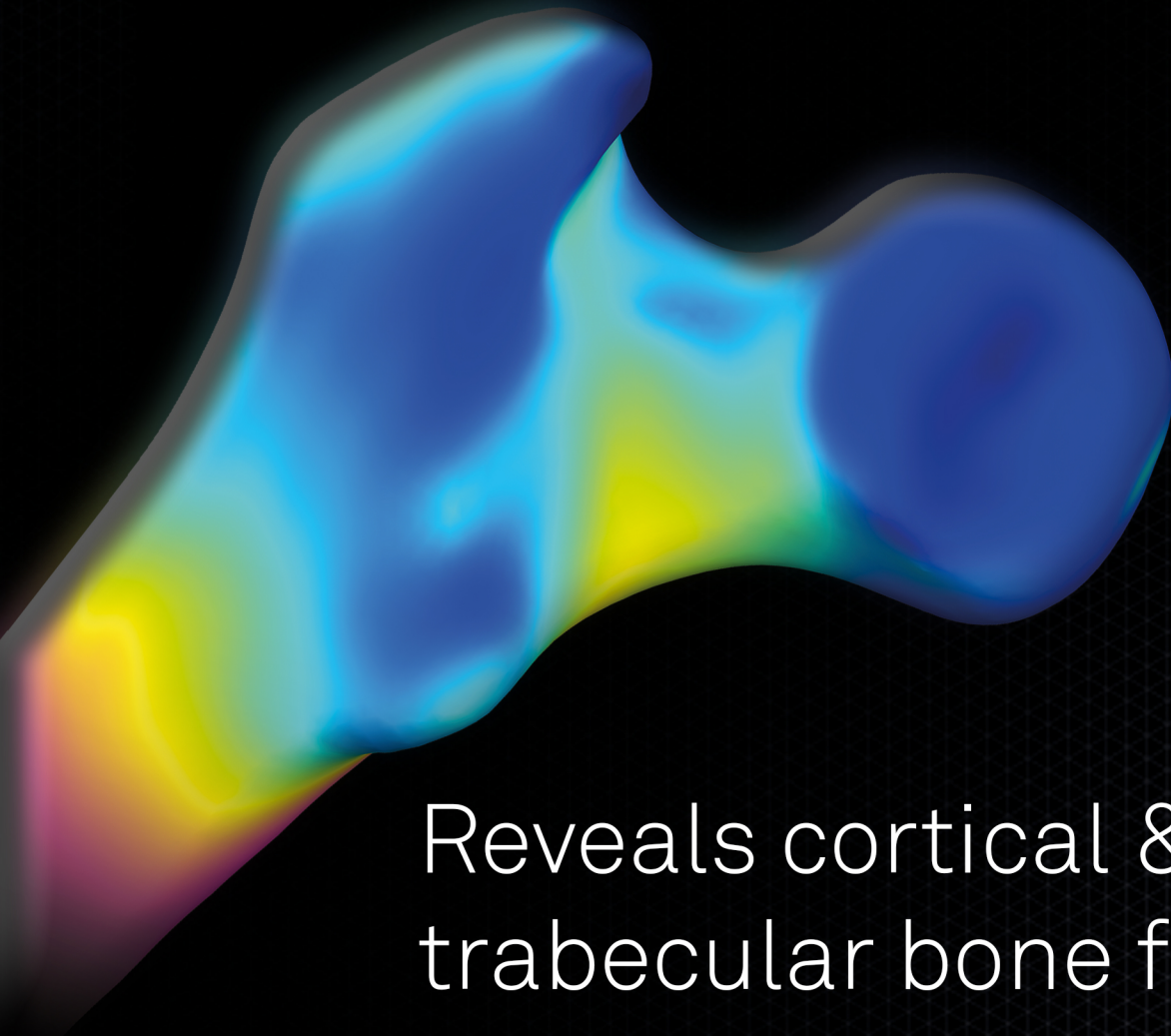


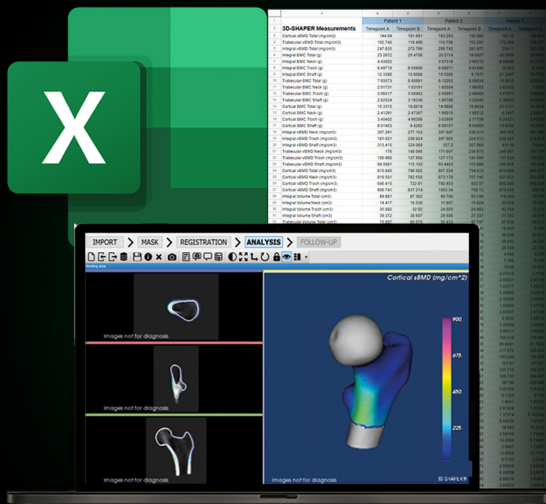


3D-SHAPER
Research



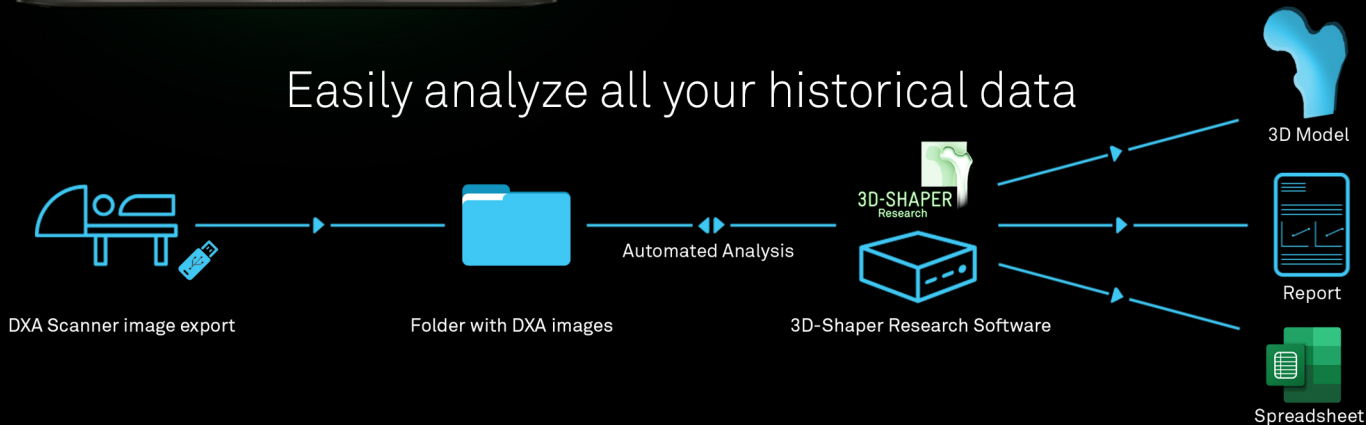
Reveals cortical &
trabecular bone from DXA

3D-Shaper® Research: Bringing 3D to DXA



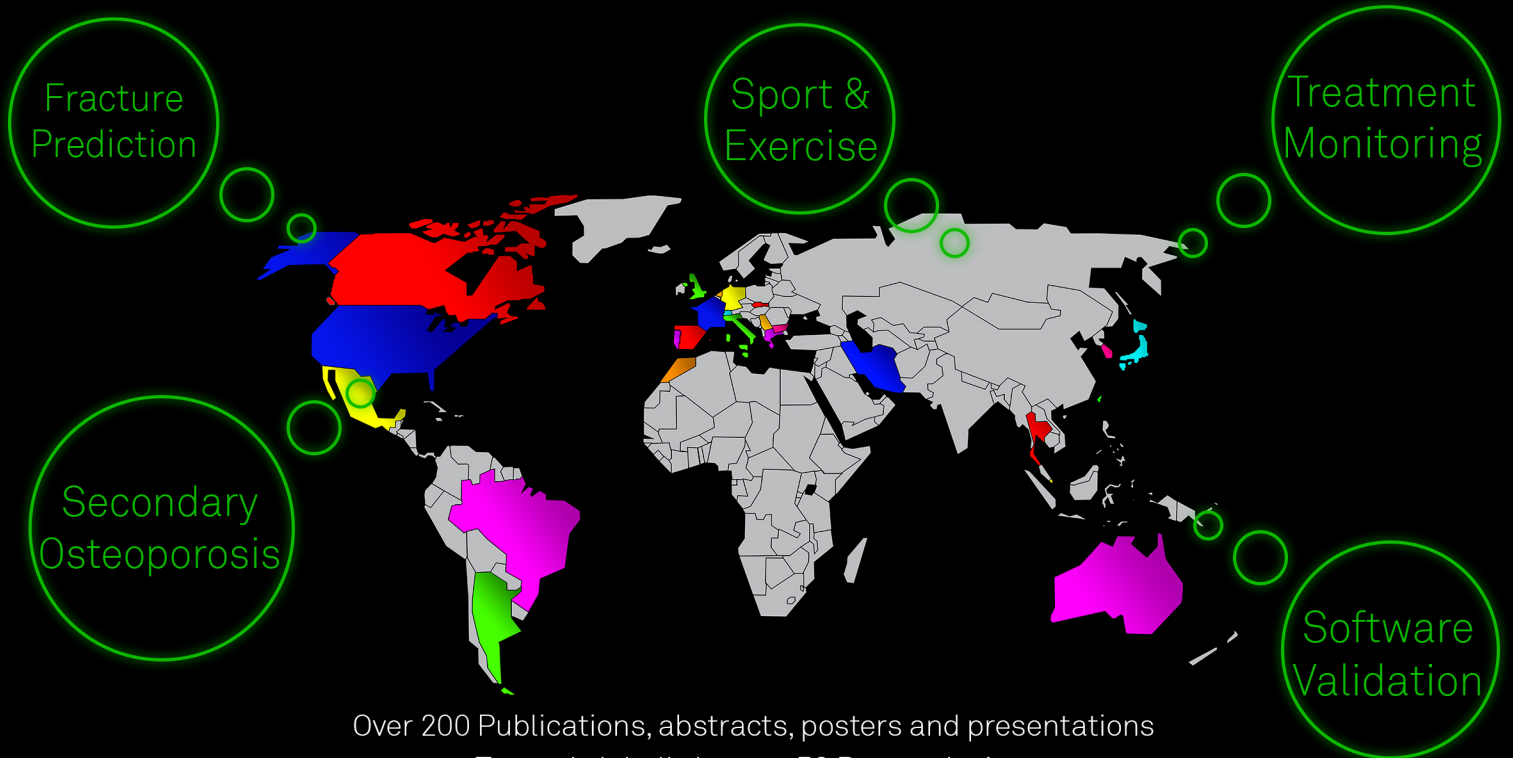
- 71 Bone Parameters
- 4 Regions of interest at the femur
- Hip structure (CSA, CSMI, Z, Buckling ratio)
- Retrospective data analysis capabilities
- No additional scan time or radiation dose

Easily analyze all your historical data



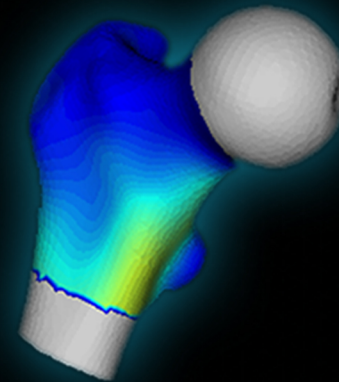
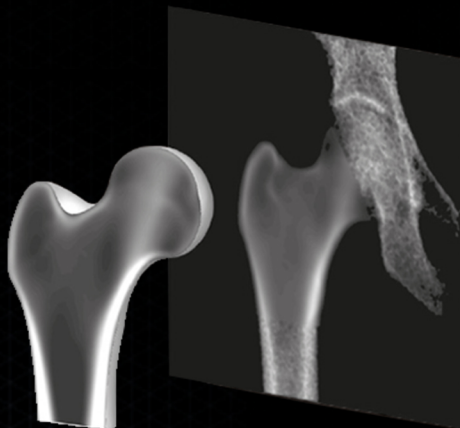
3D-Shaper® Research: Unlock the power of DXA

Explore bone health in full 3D & discover new insights
from a standard DXA acquisition



Over 200 Publications, abstracts, posters and presentations
Trusted globally by over 50 Research sites

3D-Shaper® Research: A new age in bone health research



C R E A T I N G 3 D M O D E L

Learn more at www.3d-shaper.com

Contact info@3d-shaper.com